



equity & empowerment

Anniversary Sponsor:



15th Annual Leadership Event an evening with **Gabrielle Union**

Thursday, November 19, 2020

#TEMPOLeadership



Experience that serves

You can rely on Wealth Management from U.S. Bank and our affiliate, U.S. Bancorp Investments, to provide the experience, knowledge and strong partnerships you need to succeed.

When it comes to your finances, you need insight founded on experience. At U.S. Bank Wealth Management, our team is ready to help you navigate complex financial situations and advise you every step of the way. Together we'll build a personalized strategy to help you work toward your financial goals.

U.S. Bank representatives:

Jayne Hladio, TEMPO Board Member, Past Chair
Caroline Krider, TEMPO Member

usbank.com



Investment products and services are:

NOT A DEPOSIT • NOT FDIC INSURED • MAY LOSE VALUE • NOT BANK GUARANTEED • NOT INSURED BY ANY FEDERAL GOVERNMENT AGENCY

U.S. Wealth Management - U.S. Bank is a marketing logo for U.S. Bank.

U.S. Bank is not responsible for and does not guarantee the products, services or performance of U.S. Bancorp Investments.



Member FDIC. ©2020 U.S. Bank 433505 CR-19214816 (10/20)



Discover the power in partnership



One person alone can have an enormous impact on her community. But when passionate people – with diverse backgrounds, experiences and perspectives – work together, there's no limit to what we can accomplish.

Baird is proud to support TEMPO's women leaders.

Learn more about Baird's commitment to helping women achieve their personal financial and professional goals at [WomenAtBaird.com](https://www.womenatbaird.com).

PRIVATE WEALTH MANAGEMENT
ASSET MANAGEMENT
INVESTMENT BANKING/CAPITAL MARKETS
PRIVATE EQUITY



©2020 Robert W. Baird & Co. Incorporated. Member SIPC. MC-532892.

TEMPO MILWAUKEE'S 15th ANNUAL LEADERSHIP EVENT

equity & empowerment



Featuring Gabrielle Union
Actress, Activist, and Author

Gabrielle will discuss her years growing up in Nebraska to her years in Hollywood. She will talk about her passion for women's health, equity for women in the workplace and ending violence against women. She will also share her business savvy as an entrepreneur, author and spokesperson for a number of national brands. Finally, Gabrielle will share the joys and struggles of motherhood in the midst of a global pandemic. Joining her for this special conversation is TEMPO Milwaukee Leadership Event Co-Chair Kareeda Chones-Aguam from the Milwaukee Bucks.

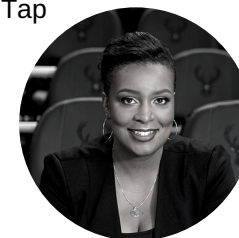
Event Schedule

5:30 p.m. to 6:00 p.m.

Welcome with co-chairs Kathleen Dohearty Penniston & Tami Garrison
Virtual Wine Tasting with co-chair Liz Poeschl & Ruby Tap

6:00 p.m. to 7:00 p.m.

Fireside chat with Gabrielle Union
Moderated by co-chair Kareeda Chones-Aguam





BRINGING MILWAUKEE TOGETHER.



On-air. Online.
And in the community. 88.9FM | radiomilwaukee.org



HUSCH BLACKWELL

Making a difference.

Husch Blackwell celebrates TEMPO Milwaukee and its efforts to advocate, elevate and accelerate women entrepreneurs and business leaders.

huschblackwell.com

Keeping Our Communities Strong

As Wisconsin's largest family-owned financial services company for the past 50 years, we're committed to investing in the health, well-being and success of our associates, our customers and our local communities - today, tomorrow and for generations to come. Learn more at JohnsonFinancialGroup.com



MGIC

We are in the mortgage insurance business and our goal is to make our customers successful in their business. But for all of us in the mortgage industry, it's more than business: *it's helping people buy homes and keep them.*

That has been our mission for over 63 years.

We are pleased to support Milwaukee's TEMPO 15th Annual Leadership Event, Equity & Empowerment.

Thank you for making today the day we move closer to our goal.



©2020 The PNC Financial Services Group, Inc. All rights reserved. PNC Bank, National Association. Member FDIC

CON PDF 0618-0106

TAKE A LOOK BACK

ON 15 YEARS

2006: Afterburner
"Flawless Execution"
Achieving excellence at the individual, team and organizational level.



2007: Lynne Lancaster



"Generational Diversity"
How to work with the four distinct generations present in our workplaces.

2008: Bill Benjamin

"Redefining Leadership"
You know your IQ, what's your EQ? Discover how Emotional Intelligence drives top leadership performance.



2009: Claire Shipman
"Womenomics"

Women are driving sweeping changes in the way individuals approach work and the way companies attract and retain executive talent.

2010: Dr. Gray Bradt

"Leading Others to Embrace Change"
How leaders can effectively identify opportunities within change and guide others to enthusiastically embrace it.



2011: Valorie Burton
"Resilience"

Survive and thrive through life and business challenges.

2012: Stacy Allison

"Leading Courageously in Challenging Times"
There is no more challenging place than at the top of the world. Conditions can change in an instant on Everest and it takes a strong leader to assess the situation, inspire a team towards action and determine the path to success.



2013: Molly Fletcher

"Be at the Top of Your Game"
The struggles and triumphs of being one of the only women sports agents in the country.

2014: Pattie Sellers

"How to Own Your Power"
Insightful stories and techniques about women who have gained significant success, power, and leadership."



2015: Shaifali Puri

"Leadership Without Borders"
Adapting for success. Leadership is an ever-evolving practice.

2016: Tommy Spaulding

"Authentic Leadership"
The impact that can be made when we work collectively towards leading more authentically and genuinely.



2017: Porter Gale

"Igniting a Culture | Embracing Disruption"
In our rapidly evolving and competitive business climate, it takes more than a great idea or break-through product to drive success.

2018: Jenny Fleiss

"Spark The Innovator in You"
More than ever, businesses and leadership teams across all industries are encouraged to think differently to remain relevant, competitive and ahead of the curve.



2019: Kendra Scott

"Brilliance and Resilience"
Jewelry designer, CEO and Kenosha-native shares her entrepreneurship story and journey to success.



TAKE A LOOK BACK

ON 15 YEARS

In 2005, several TEMPO Milwaukee members embarked on a journey to create a signature event unlike any other. An event that would bring greater awareness to our phenomenal organization, engage with Milwaukee business professionals and showcase the impact we are having in our community. Over the years, TEMPO's Leadership Event has evolved into one of the most highly regarded and valuable signature events for the organization and its members.

With a steady growth of attendees over its 15-year span, including record-breaking attendance in 2019 with an audience of more than 800, the 15th Annual Event has truly taken the tradition to a new level, far surpassing wildest dreams.



Lite

**GIVE THE GIFT OF GREAT TASTE
ONLY 96 CALS**

**TEXT* HOLIDAY TO 73255 TO ENTER
FOR A CHANCE TO WIN
RIDES WITH UBER
FOR A YEAR****

**Prize awarded as \$3,650 in Uber digital gift cards.

LEBRATE RESPONSIBLY®
 200 MILLER BREWING CO., MILWAUKEE, WI • BEER
 12 oz. 100 cals. 3.2% alc./vol. © 19 Miller Brewing Co.
 PURCHASE NECESSARY. Sweepstakes begins at or about 12:00 PM CT on 11/2/20 and ends at 11:59:59 PM CT on 1/1/21. Open only to legal U.S. residents of the U.S./DC (excl. LA), 21+ years of age. For Official Rules, including to enter, free method of entry instructions, odds, prize details, and restrictions, visit www.promorules.com/PL013550. Void in LA & where prohibited. Msg&data rates may apply. Consent not a condition of purchase. Text HEL 73255 for help. Text STOP to 73255 to cease messages.

WELCOME! FROM OUR CO-CHAIRS

On October 2, 2019, we sat at Campsite 131, raising a toast and reflecting on the incredible event that was the 14th Annual TEMPO Leadership Event featuring Kendra Scott. As we sipped, we started brainstorming- what speaker could top this? Where could we hold the event now that we put the Italian Community Center at maximum capacity? How do we make the 15th anniversary event the biggest and best the organization has ever seen?



**Kareeda
Chones-Aguam**
Milwaukee Bucks

Then 2020 happened. We don't need to tell you the impact that this year has had - you have been living it right alongside us. As we reflect on how 2020 has shaped this event, we wanted to give you a behind the scenes peek at how we arrived here tonight.



**Kathleen
Doherty-Penniston**
Branigan

The idea behind the annual leadership event is not to find a woman that "does it all," but rather a woman that uses her platform and influence to advocate for change. We wanted to find a speaker that resonated with TEMPO Milwaukee's most important missions- equity and empowerment. Equity, as it relates to gender parity, racial injustice and equal representation in all things. Empowerment, as we stand together, raising our voices while we bring others alongside us.



**Tami
Garrison**
Molson Coors

Tonight, you get to hear from one of the biggest powerhouses in the game: the incredible Gabrielle Union. Gabrielle is a leader in the fight for pay equity, an author, business owner and activist for trans rights, sexual assault survivors and women's health.

We knew that with a speaker like Gabrielle Union, we couldn't be just another virtual event. We worked hard with our partners at Mindpool to curate a unique and engaging experience that will provide the same level of energy we would all feel if we were in person. And before the event even begins, we've already exceeded all of our wildest goals. Nearly 1,500 attendees are tuning in from all around the country, smashing our previous record.



**Liz
Poeschl**
FOCUS Training

We wish we could be in person with all of you, giving you hugs and taking pictures together. In the meantime, sit back, relax and enjoy the show. We couldn't be happier that you made the time and space to attend tonight's event in this new capacity. Thank you for being one of the many reasons that the 15th Annual TEMPO Milwaukee Leadership Event will be one to remember.

ABOUT OUR FEATURED SPEAKER



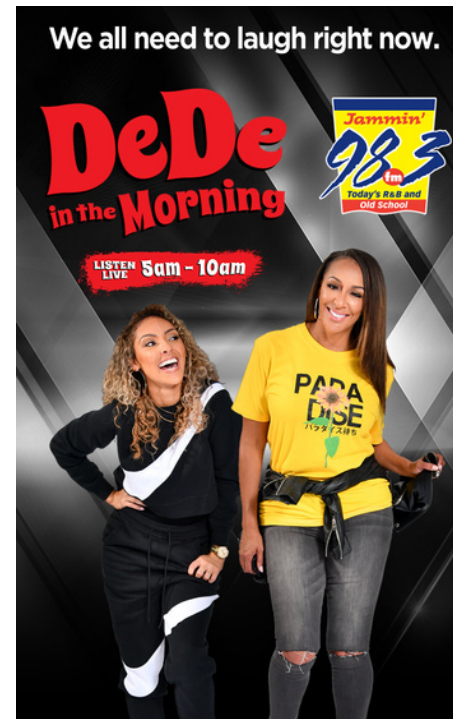
After a career in front of the camera spanning nearly three decades, actress, author, and activist, **Gabrielle Union**, continues to bring iconic performances on and off screen. Most recently starring in the Spectrum Original series, L.A.'s *Finest*, Gabrielle is known for her roles in films such as *Good Deeds*, *Cadillac Records*, *The Perfect Holiday*, Tyler Perry's *Daddy's Little Girls*, *Running With Scissors*, *Bad Boys II*, Universal's cult hit *Bring It On*, *Love & Basketball*, *Ten Things I Hate About You*, and *She's All That*. On the small screen, the UCLA graduate previously starred on the BET hit series, *Being Mary Jane* and on Disney Junior's *The Lion Guard*.

Gabrielle's passion for acting is rivaled by her involvement as an activist who works on issues around women's health, violence against women, racism, and gender inequality. She is an Ambassador for the Susan G. Komen Foundation, an ally to the LGBTQ+ community and an active supporter of the Young Survivor Coalition (YSC) and the Rape Treatment Center (RTC) at UCLA. In her free time, Gabrielle often travels on behalf of Susan G. Komen and the YSC to share her story of losing a friend to Breast Cancer. In 2004, Gabrielle helped found a program called "A Step for Success", which helps to raise funds for the economically challenged Kelso Elementary School in Los Angeles.

Nominated for an NAACP Image Award for Outstanding Literary Work, Gabrielle is the author of the New York Times Bestseller, *We're Going to Need More Wine*. Her memoir features a powerful collection of essays about personal, thought provoking stories and reflections on a range of topics that continue to define the contemporary landscape: race, gender, feminism, sexuality, marriage, beauty and fame.

Gabrielle and her husband, Miami Heat Player Dwyane Wade, currently split their time between Los Angeles and Miami.

EVERY CHANGE NEEDS A CHAMPION. BE THAT CHAMPION.



Milwaukee
MAGAZINE

The Bettys

A Virtual Awards Event

Honoring Betty Ewens Quadracci and seven maverick female leaders in Milwaukee.

Tuesday, December 15th
NOON - 1:30 PM

milwaukee.com/bettysevent

SPONSORED BY

The logo for Quad, featuring the word "Quad" in a stylized font with a circular graphic element.

ABOUT TEMPO MILWAUKEE

TEMPO Milwaukee is a membership organization that connects women leaders with diverse backgrounds and experience to support, advise, learn and create relationships with one another. TEMPO Milwaukee **ADVOCATES** on behalf of women, advancing their interests within the community. TEMPO Milwaukee **ELEVATES** member awareness by sharing knowledge and leadership experience and positioning women at the forefront of the business community. TEMPO Milwaukee **ACCELERATES** the success of our members and of our community by acting as a collective instead of as individuals.

OUR MISSION

To further the impact of women leaders in our community.

OUR VISION

A society where women hold an equal place in leadership, policy and decision-making.

CORE COMPETENCIES

Leadership
Mentoring
Networking

BOARD OF DIRECTORS

Board Chair Lori Richards Mueller Communications	Incoming Chair DeVona Wright Cottrell GMR Marketing	Past Chair Marybeth Cottrill BMO Wealth Management	Treasurer Kris Best BVK
--	--	---	--------------------------------------

DIRECTORS

Collaboration

Tami Garrison, Molson Coors

Communications

Rebecca Ehlers, LUMIN Schools

Diversity & Inclusion

Erickajoy Daniels, Advocate Aurora Health

Emerging Women Leaders

Heather Turner Loth, EUA

Governance

Kelly Renz, inVantage, LLC

Membership

Mary Burgoon, Rockwell Automation

DIRECTORS-AT-LARGE

Kathie Campbell, Clarios

Sharon deGuzman, Baird

Cathy Girard, Goodwill Industries of

Southeastern Wisconsin

Julie Granger, MMAC

Jayne Hladio, US Bank

Gerry Howze, PEARLS For Teen Girls

Marilyn Krause, Krause Communications

Jody Lowe, The Lowe Group

Paula Pergl, Lauber Business Partners

TEMPO MILWAUKEE STAFF

President & CEO Jen Dirks	Director of Membership & Programs Marit Harm Spransy	Communication & Events Specialist Kelsiee Arreguin	Intern Amanda Patterson
---	--	--	-----------------------------------

ABOUT TEMPO MILWAUKEE

MEMBER PROFILE

PROFESSIONAL EXPERIENCE:
10+ years of professional experience

ADDITIONAL EXPERIENCE:

5+ years of senior/executive-level or high-level managerial experience

LEADERSHIP:

One of her organization's top executives or has direct working involvement with top executives.

COMMUNITY INVOLVEMENT:

Demonstrates commitment to the community through involvement and leadership in professional and/or civic organizations.

ENDORSEMENT:

Strong nomination from a current TEMPO Milwaukee member who is familiar with the membership criteria.



439

MEMBERS

representing



304

COMPANIES

EWL PROFILE

PROFESSIONAL EXPERIENCE:
6+ years of professional experience

LEADERSHIP:

Displays leadership within her company/organization/

COMMUNITY INVOLVEMENT:

Demonstrates commitment to the community through involvement and leadership in professional and/or civic organizations. Involvement is above and beyond required job responsibilities.

ENDORSEMENT:

Strong nomination from a current TEMPO Milwaukee member or Emerging Women Leader who is familiar with the membership criteria.



284

EMERGING
WOMEN
LEADERS

representing



173

COMPANIES

THANK YOU TO OUR SPONSORS

ANNIVERSARY SPONSOR



ADVOCATE SPONSORS



SUPPORTING SPONSORS



NETWORKING SPONSORS



CORPORATE SPONSORS



WATCH PARTY SPONSORS

- | | |
|-----------------------------|--|
| Bader Rutter | Ken & Kris Best |
| Boelter + Lincoln | The Lueder Group - Northwestern Mutual |
| The Brimful Life | LUMIN Schools |
| Carma Laboratories | ManpowerGroup |
| Clarios | Marcus Performing Arts Center |
| Crescendo Wealth Management | Milwaukee Bucks |
| Deloitte | Novo Group, Inc. |
| Donna Flynn & Kate Meyer | Old National Bank |
| Erickajoy Daniels | Quarles & Brady |
| Experis | Rogers Behavioral Health |
| FOCUS Training | RSM |
| FIS | UW-Milwaukee |
| Forward Space | Visit Milwaukee |
| Godfrey & Khan | WaterStone Bank |
| Grant Thornton | WHEDA |
| JLL | WWBIC |

MEDIA PARTNERS



TALENT PARTNER



TEMPO Milwaukee recognizes our role in continuing to advocate and mentor the next generation of women leaders - especially those from underserved areas in our city. This commitment means, thanks to the generosity of several of our corporate sponsors and TEMPO members, several local organizations supporting women and girls will receive complimentary tickets to attend this year's event.



Thank you to our non-profit supporters

- | | | |
|------------------------|--|-------------------|
| Ken & Kris Best | The Lueder Group - Northwestern Mutual | Old National Bank |
| DeVona Wright Cottrell | Marcus Performing Arts Center | Reinhart Boerner |
| Sharon deGuzman | | Van Deuren, s.c. |
| The Lowe Group | | WaterStone Bank |

Home
away from
Home

Shop Local

Neroli
SALON & SPA
GIFT CARD

OPEN EVERYDAY **NEROLISPA.COM**

Mention Code TEMPO For
20% OFF FIRST SERVICE

SKN BAR
AESTHETIC SKIN SOLUTIONS **RX**

SKIN TREATMENTS • INJECTABLES • LASER HAIR REMOVAL • LASER AESTHETICS
NORTH SHORE • LAKE COUNTRY | 414.488.7900

RESERVATIONS AVAILABLE AT SKNBARRX.COM

OWN YOUR IMPACT

Join a team that's committed to fostering an inclusive ownership culture that drives innovation and enhances the lives of seniors. **Apply today!**

DirectSupply.com/Careers

DIRECT SUPPLY

© 2020 Direct Supply, Inc. All rights reserved.

eua

DESIGN
TO ELEVATE PEOPLE'S PONTENTIAL

milwaukee : madison : denver

architecture : planning : interior design eua.com

Quad is proud to sponsor the TEMPO Leadership Event supporting the next generation of women leaders.

Quad

QUAD.com

PROUD TO SUPPORT

We've always been committed to supporting our communities, even during times of uncertainties. We are proud to support TEMPO Milwaukee's 15th Annual Virtual Leadership Event.

To learn more about our inclusive and equitable workplace and how our colleagues make a difference, visit AssociatedBank.com/Careers

Associated Bank

Member FDIC. (11/20) P02424



**BE FEARLESS
IN THE PURSUIT
OF YOUR DREAMS.**

Learn more at AmFam.com.



ALVERNO COLLEGE

**EDUCATING
DIVERSE,
PRINCIPLED
WOMEN
LEADERS FOR
MORE THAN
130 YEARS.**

alverno.edu

BRANIGAN

A CREATIVE
COMMUNICATIONS
COMPANY

BRANIGANINC.COM

*Advocating
Women's
Leadership*

Reinhart
Boerner Van Deuren s.c. Attorneys at Law

reinhartlaw.com · 414.298.1000

Together, we empower the
next generation of **thinkers,
makers, and innovators.**

RA **Rockwell
Automation**

**HEARTLAND
VALUE FUND**

It's all in the
details.

For more information visit heartlandadvisors.com.

An investor should consider the Funds investment objectives, risks, and charges and expenses carefully before investing or sending money. This and other important information can be found in the Funds prospectus. To obtain a prospectus, please call 800-432-7856 or visit heartlandadvisors.com. Please read the prospectus carefully before investing.

Investing involves risk, including the potential loss of principal. The Heartland Funds are distributed by ALPS Distributors, Inc.

TEMPO
MILWAUKEE
ADVOCATE. ELEVATE. ACCELERATE.

THANK YOU!

TEMPO Milwaukee thanks you for
your continued support in making
2020 a milestone year, celebrating:

45 years as an organization
30 years of the Mentor Awards
15 years of the Leadership Event
10 years of Mentor Circles
5 years of Emerging Women Leaders

www.tempomilwaukee.org



Kohl's is proud to sponsor TEMPO's 15th Annual Leadership Event.

KOHL'S

Because we're here

This is where Johnson Controls is proud to be a community partner. This is where we live, work and travel. And this is where families and businesses thrive.

Our community is stronger.



Learn more at johnsoncontrols.com or [@johnsoncontrols](https://twitter.com/johnsoncontrols).

Creating brighter futures

We Energies is proud to support **TEMPO Milwaukee** and the individuals and organizations dedicated to empowering women.

Together, we're creating brighter futures for the communities we serve.



www.we-energies.com

 **Aurora Health Care**

We are  AdvocateAuroraHealth

thank you for joining us



15th Annual Leadership Event an evening with **Gabrielle Union**

Thursday, November 19, 2020

#TEMPOLeadership